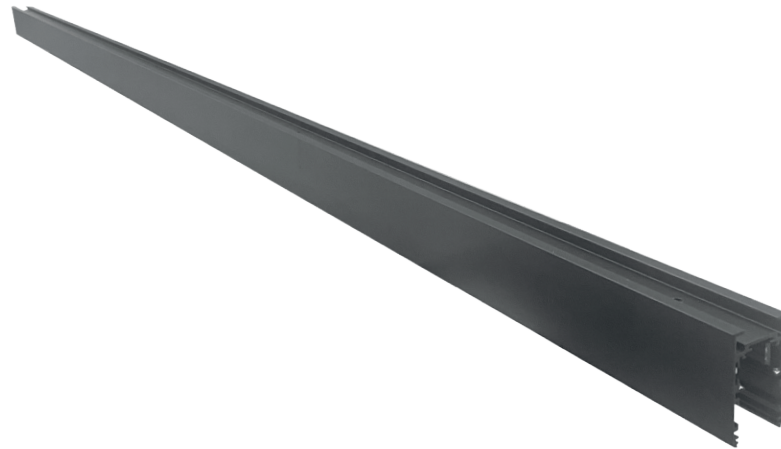
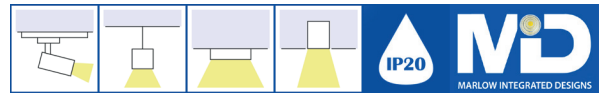


MAG-TRK ADJECO

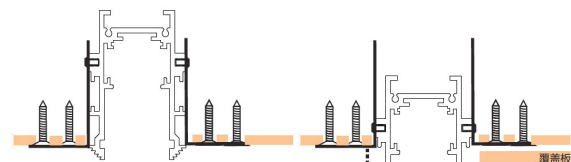


The MAGNETIC TRK ECO ADJUSTABLE is made to be compatible with the MAG TRK-15, MAG TRK-8, MAG-LINDA and the MAG-LINORA with the tracks and linears being able to be attached on the same system with adjustable levels.

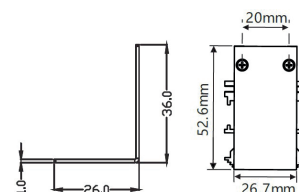
- Colours: Matt White or Matt Black (/WH/BK)
- The optimal rail connections is no more than 40 meters
- Connectors: See MAG-TRK System page for more details (/VIL/VEL/LL/TM/CS/HL) *If required*
- Compatible with any brand external 48V output constant voltage switching power supply
- Magnetic End Caps (/MC)
- Mountings: Plaster-in (/P)
- IP Rating: IP20
- Section View Dimensions: See image below
- Dimensions: Standard Magnetic Track Length - 0.5M, 1.0M, 1.5M or 2.0M
- Please contact technical department for more information

Product	MAG-TRK ADJECO Magnetic Track Adjustable Eco System						
Dimensions	See image to the right						
Size Lengths	/0.5M		/1M		/1.5M		/2M
Connectors *If required*	/LL	/HL		/VEL	/VIL	/TM	/CS
Colour	/WH White				/BK Black		
Mountings	/P Plaster-in						
To Specify: Magnetic Track Eco with 0.5M length, colour black, Plaster-in with 2 Vertical inner L splicing and 2 Magnetic caps. Part code: MAG-TRK/ECO/0.5M/2VIL/2MC/P/BL							

Mountings



The limit adjustment distance is 23mm
Adjust the height according to the covering plate used



MAGNETIC- TRK SYSTEM

Connector Installations

Various connecting options for the
Magnetic TRK solutions shown below.
Designed for desired shape and size.

